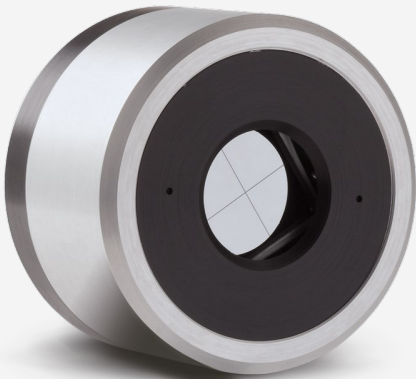




QUAD-20-MT-E

4-quadrant laser position sensing detector for pulsed lasers.



PRODUCT FAMILY KEY FEATURES

MEASURE, TRACK AND ALIGN

Follow your laser beam wherever it goes.

4-CHANNEL DETECTORS

Unique quadrant detector technology senses laser beam position with high resolution.

FOR CW, PULSED AND HIGH REP RATE LASERS

- QUAD-E: energy per pulse from μJ to mJ
- QUAD-P: powers from μW to mW

FROM UV TO FIR AND THZ

Absorbers to cover all sources, from UV to millimeter wavelengths

LARGE AREA SENSORS

9 mm and 20 mm square detectors

FAST USB 2.0 CONNECTION

Ensures full speed tracking

INCLUDES APPLICATION SOFTWARE

Complete LabView application software included, with many features

COMPATIBLE STAND

[STAND-D-233](#)



SPECIFICATIONS

MEASUREMENT CAPABILITIES

| | |
|--------------------------------|--------------------------|
| Spectral range | 0.1 - 3000 μm |
| Typical rise time | 150 μs |
| Typical power sensitivity | 2000 V/W |
| Maximum repetition rate | 1000 Hz |
| Minimum beam size ¹ | 10 mm \varnothing |
| Minimum position resolution | 1 μm |
| Maximum measurable energy | 20 mJ |
| Noise equivalent energy | 1 μJ |
| Maximum pulse width | 2.5 μs |

1. For optimal performance

DAMAGE THRESHOLDS

| | |
|--|-----------------------|
| Maximum average power density ¹ | 0.1 W/cm ² |
| Maximum energy density ² | 50 mJ/cm ² |

1. At 1064 nm.

2. At 1064 nm, 10 ns.

PHYSICAL CHARACTERISTICS

| | |
|-----------------|-------------------------------|
| Aperture width | 20 mm |
| Aperture height | 20 mm |
| Absorber | MT |
| Dimensions | 63.5 \varnothing X 40.6D mm |
| Weight | 0.18 kg |



ORDERING INFORMATION

QUAD-20-MT-E

201775

Specifications are subject to change without notice. Refer to the user manual for complete specifications.

INTERESTED IN THIS PRODUCT?

GET A QUOTE

Find your local sales representative at gentec-eo.com/contact-us